



Get the latest updates on the renovation of Mayville State's historic Old Main! Follow progress, upcoming projects, and more as PCL/Community Contractors work to preserve its legacy and shape its future.

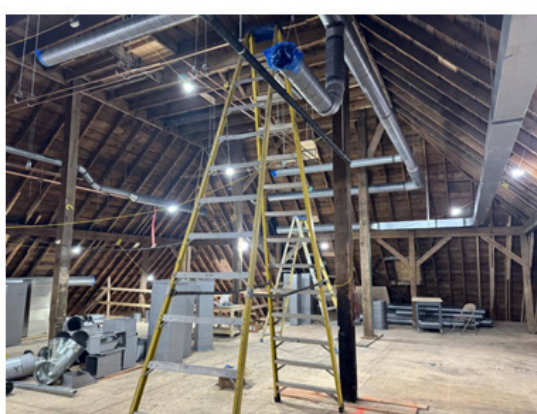


PROGRESS UPDATES

- **Basement:** Putting up structural steel and taking down the temporary shoring.
- **First floor:** Demolition of brick walls and installation of structural steel.
- **Second floor:** Demolition of existing windows and new window installation.
- **Third floor:** Subfloor and structural beam installation.
- **Fourth floor:** Installing the rough-in for HVAC.



New windows.



Up on 4th floor they are installing the HVAC on the east end.



Removing parts of the brick wall to make more room on 1st floor.



CMU build up on the new stairwell addition.



UPCOMING WORK

In the next few weeks, we'll begin working on framing partition walls and continuing with installing HVAC on 3rd floor.



DID YOU KNOW?



QUALITY CORNER

Quality Absolutes

At PCL, quality is non-negotiable. That's why we adhere to our Five Quality Absolutes:

1. Quality Hazard Analysis (QHA)
2. Pre-Installation Meetings
3. First Work Inspections
4. First Material Deliveries
5. Mock-Ups

These essential practices ensure seamless coordination across all jobsite activities, setting the



SAFETY TOPIC

Back-Over Prevention

With the constant movement of heavy equipment on our jobsites, back-over prevention is critical to protecting both workers and materials. Key safety practices include:

- Proper Operator Training: Ensuring all operators are skilled and certified.
- Pre-Operation Inspections: Checking equipment before use to identify potential hazards.
- Correct Mirror Adjustments: Maximizing visibility for operators.
- Understanding Blind Spots: Educating operators and crew members about equipment blind spots to avoid accidents.

By following these practices, we create a safer, more efficient work environment for everyone.



This project is funded through appropriates made by the North Dakota 68th Legislative Assembly.