



MAYVILLE STATE  
UNIVERSITY

Old Main  
Renovation

Jobsite Newsetter

*PCL/Community Contractors is happy to present the Mayville State University Old Main Renovation jobsite newsletter. This newsletter features progress updates, upcoming work, fun facts and more!*



## PROGRESS UPDATES

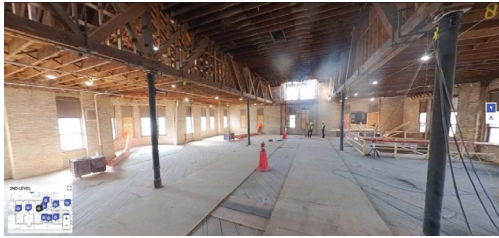
- **Basement:** Selective demolition is complete. Structural shoring has begun, and we will soon start the structural demolition to open up the space. Tuckpointing has commenced to repair the interior of the foundation walls.
- **First floor:** Selective demolition is complete, and MEP demolition has also been finished.
- **Second floor:** Selective demolition is nearly complete; work is ongoing to remove portions of the old auditorium ceiling.
- **Third floor:** Selective demolition continues; we are about 90% finished. We've exposed the two large girder trusses, which will remain visible in the finished product.
- **Fourth floor:** Selective demolition is still in progress; we are about 80% finished.



*Fourth Floor: Future classroom / large conference room space*



*Basement: New auditorium space*



*Second Floor: Old theater space*



*Second Floor: Corridor*



*Exterior: Demolition of east stairwell*



## UPCOMING WORK

Today, we are beginning excavation for the west addition and starting foundation repairs on the entire west half of the building.



## DID YOU KNOW?

If you were to place all the drywall for this project end to end, it would be over 15 miles long!



## QUALITY CORNER



### Proactive Measures for Protecting Old Main During Excavation

Before we can begin excavation, we will set up vibration monitoring. This will allow us to monitor the building's structure and notify us of any movements or shifts. This is especially important for Old Main, a 130-year-old wood-framed structure with stone foundations. Additionally, we will use ground thawing equipment to remove frost from the ground before digging starts. This process helps the soil to break free from the foundation walls, preventing potential damage when we remove the soil.



## SAFETY TOPIC

### Keeping Dry

We have several temporary enclosures on the building after the exterior demolition crew has finished. Due to the recent storms, these are critical items to watch and maintain to prevent water intrusion into the building and to prevent slips and falls or overhead concerns.



*This project is funded through appropriates made by the North Dakota 68th Legislative Assembly.*

April, 2025