



At Mayville State, you'll earn more than a degree. You'll earn an education.

Mathematics Education • Bachelor of Science in Education Online

Personal Service

We pride ourselves on being just the right size to give students the time they deserve. Our average class size is 15. Your professors will introduce you to new ways of thinking, exploring issues creatively, and evaluating ideas as you engage in the world. You will have small, personalized class settings and the most advanced technology you are likely to see on a college campus.

Opportunity

You'll have the chance to develop your leadership skills, which will help you succeed in your career after graduation.

Success

Our students get jobs. Period. We also have internship opportunities to give you real, hands-on learning experiences and make your resumé stand out. Job placement rates are consistently 96-98%!

Flexible

Through the completely online course rotation, you can balance work, family, and coursework demands as you complete this degree.

Value

The combination of MSU's affordability and its unique offerings make it a Best in the Midwest College, as designated by the Princeton Review. MSU was also named one of the 2013 top three Public Regional Colleges in the Midwest by U.S. News & World Report.



The Program

MSU's mathematics education program provides you with the knowledge, skills, and techniques that are essential to using mathematics in teaching positions. You'll develop an awareness of the vital connections between mathematical topics and their real world applications. The online mathematics education program, with a business administration or general science minor, is a transfer student-oriented program with courses offered in a cohort-based rotation.

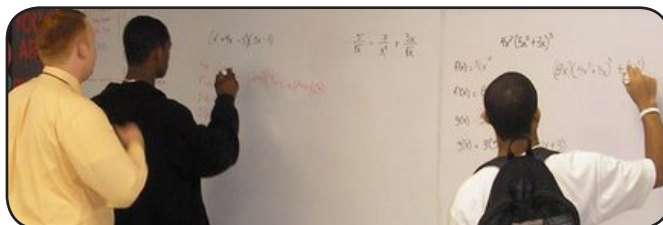
Please note that this is an eight-semester, or approximately three-year, cohort program, including two summer sessions. If a student drops, fails, or does not register for a course in the three year-rotation, it is the student's responsibility to find an appropriate course substitution or wait until the course is offered again.

Advantages

Affordable. MSU is a fully accredited, public university. Online tuition and fees for this unique online degree opportunity are highly competitive and affordable.

Transfer-Friendly. Most coursework previously earned from accredited institutions will be accepted. Small class sizes will allow you access to your instructors. You'll be able to get the attention you need while strengthening the foundation of your education in mathematics.

Employment Options. Numerous teaching and nonteaching career opportunities are available. In addition to teaching careers, graduates from MSU's mathematics education program will be prepared for career opportunities as accountants, actuaries, bankers, college administrators, economists, tax managers, computer technicians, statisticians, demographers, system analysts, or chief financial officers. Students would also be prepared to attend graduate school for further education in the field of mathematics.



1-800-437-4104
www.mayvillestate.edu

A Word About Our Grads

Mayville State mathematics education graduates are prepared for a bright future in middle and high school teaching positions. They may be found teaching in high schools in North Dakota, Minnesota, Texas, Nevada, Nebraska, and Kansas, as well as at the Minnesota State University Moorhead, Valley City State University, and Bismarck State College.

Mathematics Education

Core Requirements (33 S.H.)

MATH 105	Trigonometry.....	2
MATH 165	Calculus I.....	4
MATH 166	Calculus II.....	4
MATH 265	Calculus III.....	4
MATH 323	Probability & Statistics.....	3
MATH 389	Modern Geometry.....	3
MATH 412	Differential Equations.....	3
MATH 420	History & Philosophy of Math.....	3
MATH 435	Theory of Numbers.....	3
MATH 443	Algebraic Structures w/ Prog.....	3
MATH 476 S	Comprehensive Exam.....	1

Professional Education Courses

Core Requirements (36 S.H.)

#Psych 255	Child & Adolescent Psychology.....	3
##Educ 250	Intro. to Education.....	2
##Educ 298	Pre-Prof Field Experience.....	1
Educ 272	Educational Technology.....	1
Educ 381	Human Relations/Cultural Diversity.....	3
Educ 390	Spec Needs/Inclusive Environment.....	3
Educ 400	Student Teaching.....	10
Educ 401	Electronic Portfolio/Assessment.....	2
Educ 422	Learning Theory & Evaluation.....	3
Educ 426	Reading in Content Area.....	3
Educ 480	Gen Methods for Secondary Ed.....	2
Educ 398	Secondary Educ Field Experience.....	1
Educ 483	Secondary Methods for Math.....	2

Teacher Education Requirements

1. ## A minimum grade of "B" is required in EDUC 250 and EDUC 298.
2. # A minimum grade of "C" is required in PSYC 255 and the prerequisites.
3. PRAXIS I (PPST) score of at least 516 with passing 2 of 3 subtests (math/reading/writing).
4. PRAXIS II has 2 parts, the PLT (0624) and the math content (0061). Registration is through www.ets.org. PRAXIS needs to be passed before graduation. When registering make sure that Mayville State University is listed as a score recipient. PRAXIS II math content must be passed at ND's cut score of 139.
5. Admission required before permitted to enroll in 300 level EDUC courses.
6. GPA of 2.75

General Education Courses

This major consists of 33 semester hours in mathematics, including completion of the final comprehensive examination (MATH 476S).

All Mathematics Education majors complete the Mathematics Education major and Professional Education courses, as well as 36 hours of general education, including:

- COMM 110 - Fundamentals of Public Speaking
- ENGL 110 - Composition I
- ENGL 120 - Composition II
- GEOG 103 - Multicultural World, Global Issues
- MATH 103 - College Algebra
- PSYC 111 - Introduction to Psychology

The above are pre-requisite courses requiring a minimum grade of a "C" for teacher education. Students without a previously earned bachelor's degree but with an associate's degree complete an additional minor. Business Administration or General Science minors are available online. Students with an earned bachelor's degree are not required to complete a minor. Students without any previous degree must complete a minor, the IT certificate, and HPER 100 and HPER 210.

Student teaching can be arranged at a school close to your home in most states.

Business Administration Minor

Core Requirements (18 S.H.)

ACCT 200	Elem of Accounting I.....	3
ACCT 201	Elem of Accounting II.....	3
ACCT 360	Accounting Systems.....	2
BADM 301	Principles of Marketing.....	3
BADM 302	Principles of Management.....	3
BOTE 347	Computer App in Business.....	3
BUSN 491	Professional Development.....	1

General Science Minor

Select from (20 S.H.):

BIOL 150/L	General Biology I/Lab.....	4
BIOL 151/L	General Biology II/Lab.....	4
BIOL 220/L	Anatomy & Physiology I/Lab.....	4
BIOL 221/L	Anatomy & Physiology II/Lab.....	4
GEOL 115/L	Introductory Geology/Lab.....	4
PHYS 251	University Physics I.....	4
PHYS 252	University Physics II.....	4

Office of Extended Learning
330 Third Street NE, Mayville, ND 58257
800-437-4104, ext. 34631

Robert Miess, Division Chair of Science & Math
1-800-437-4104, ext. 34885
robert.miess@mayvillestate.edu

Connie Kaldor, Transfer Specialist
1-800-437-4104, ext. 34721
connie.kaldor@mayvillestate.edu

